



## How to book your CEBU PACIFIC ticket

To make a booking with Cebu Pacific, please provide the information requested on the booking form (see following page) and fax along with the copy of the passport of each passenger to the relevant fax number for your departure city.

### **【Required Information】**

1. Passport photocopy for each passenger
2. Daytime contact number, email address, and fax number of the lead passenger
3. Preferred flight destination and dates of travel
4. A yes/no response to any optional advance purchase add-ons, such as baggage allowance, hot meals, and seat selection.

(For passengers requiring additional leg room, the exit row seat option is a prime choice. However, there are certain criteria that the passenger must meet to guarantee this allocation at check-in.)

### **【Fax Numbers】**

**Tokyo: 03-3593-6534**

**Osaka: 06-6265-2501**

**Nagoya: 052-229-1033**

**Fukuoka: 092-732-3005**

After your flight is booked, you will be sent the flight details and total cost breakdown via fax.

If there are no mistakes in this information, please make payment via bank deposit/transfer by close of banking on the due date. **We regret to advise that we do not accept credit card payment.**

After payment has been made, you will be sent an E-ticket via email.

### **【Conditions】**

- **After deposit is made, the booking becomes non-refundable. Therefore, please check the flight details, spelling of passenger name(s), etc. carefully before making the deposit.**
- For International flights from Japan⇔Manila/Cebu, payment and ticketing must be completed within 72 hours from the time of confirmed reservation. For Domestic flights and other International flights other than Japan, payment and ticketing must be completed within 12 hours of confirmed reservation.
- If the departure date is less than a week from time of reservation, the passenger must come to the ASI office to purchase ticket directly.
- If receipt of the remitted funds cannot be confirmed by the due date, your reservation will be cancelled.
- Fares on all flights do not include any checked baggage, hot meals, seat selection, or other optional add-ons. If you would like to take advantage of the optional products and services, please request when booking your flight. Additionally, please note that the optional fees are also non-refundable and cannot be cancelled.
- Infants without a seat cannot book checked baggage.
- Please advise us in advance if a wheelchair or special assistance is required. Additionally, please advise if any of the passengers in the booking are expecting so we can advise procedures.
- **We do not accommodate any questions or inquiries for flights booked via Cebu Pacific's website (cebuspacificair.com). Please call the Manila Call Center (+632-7020-888) directly for assistance.**



【送信 FAX NO.】

東京: 03-3593-6534 大阪: 06-6265-2501 名古屋: 052-229-1033 福岡: 092-732-3005

Reservation and Ticketing Request Form						
Passenger Name(s) as written on passport / 搭乗者名 (パスポート通りのアルファベット表記でお願いいたします。)						
Last Name / 姓		First (Middle) Name / 名			Title	
Baggage Allowance 受託手荷物	Outbound 往路	0kg・20kg・32kg・40kg		Inbound 復路	0kg・20kg・32kg・40kg	
Meal/Seat Assign Request 機内食・座席指定希望	Outbound 往路			Inbound 復路		
Passenger Contact Information / お客様ご連絡先情報						
Cell Phone Number 携帯電話番号		FAX				
E-mail Address Eメールアドレス						
Requested Flights / ご希望便						
	Flight No. 便名	Departure Date 日付	Origin 出発地	Time 時間	Destination 目的地	Time 時間
1				:		:
2				:		:
3				:		:
4				:		:

こちらにパスポートコピーの添付をお願いいたします。  
Please attach the Passport copy.

# BAGGAGE OPTION

## 《INTERNATIONAL SECTOR》

### Prepaid Fee

Per Sector (and v.v.)	BG20	BG32	BG40
	(Standard-up to 20kg)	(Large-up to 32kg)	(Extra Large-up to 40kg)
Initial Booking	JPY2,300	JPY3,500	JPY4,800
Manage Booking	JPY2,800	JPY4,200	JPY5,900

### Baggage rate at the airport (Guest can purchase up to 15kg only)

BG15 (Small-15kg)	NARITA - MANILA / CEBU	JPY 2,900	MANILA / CEBU - NARITA	PHP 1,200
	NAGOYA - MANILA		MANILA - NAGOYA	
	OSAKA (KANSAI) - MANILA		MANILA - OSAKA (KANSAI)	
	FUKUOKA - MANILA		MANILA - FUKUOKA	

### Excess baggage rate at the airport (JAPAN-PHILIPPINES)

Per 1kg	NARITA - MANILA / CEBU	JPY 2,800	MANILA / CEBU - NARITA	PHP 800
	NAGOYA - MANILA		MANILA - NAGOYA	
	OSAKA (KANSAI) - MANILA		MANILA - OSAKA (KANSAI)	
	FUKUOKA - MANILA		MANILA - FUKUOKA	

## 《DOMESTIC SECTOR》

### Prepaid Fee

Per Sector (and v.v.)	BG20	BG32	BG40
	(Standard-up to 20kg)	(Large-up to 32kg)	(Extra Large-40kg)
Initial Booking	PHP340	PHP700	PHP1,100
Manage Booking	PHP410	PHP850	PHP1,300

\* Above rates are VAT exclusive

### Baggage rate at the airport (Guest can purchase up to 15kg only)

BG15 (Small-15kg)	All domestic flights within the Philippines	PHP700
----------------------	---	--------

\* Above rate is VAT exclusive

### Excess baggage rate at the airport \*Inclusive of VAT

Per 1kg	All domestic flights within the Philippines	PHP250
---------	---	--------

### 【Notes】

- \* Airbus: Maximum baggage allowance of 40kg  
(Maximum weight per piece limited to 32kg)
- \* ATR: Maximum baggage allowance of 20kg
- \* May be purchased up to 4 hours before the estimated time of departure.
- \* The rates written above are subject to change without prior notice.



# SPORTS EQUIPMENT

## 《INTERNATIONAL SECTOR》

### Prepaid Fee

Per Sector (and v.v.)	SEF 15kg (Small-15kg)	SEF 20kg (Standard-20kg)	SEF 30kg (Large-30kg)	SEF 40kg (Extra Large-40kg)
		<b>JPY2,800</b>	<b>JPY3,500</b>	<b>JPY4,200</b>

### Baggage rate at the airport (Guest can purchase up to 15kg only)

BG15 (Small-15kg)	NARITA - MANILA / CEBU	JPY 2,900	MANILA / CEBU - NARITA	PHP 1,200
	NAGOYA - MANILA		MANILA - NAGOYA	
	OSAKA (KANSAI) - MANILA		MANILA - OSAKA (KANSAI)	
	FUKUOKA - MANILA		MANILA - FUKUOKA	

## 《DOMESTIC SECTOR》

### Prepaid Fee

Per Sector (and v.v.)	SEF 15kg (Small-15kg)	SEF 20kg (Standard-20kg)	SEF 30kg (Large-30kg)	SEF 40kg (Extra Large-40kg)
		<b>PHP1,000</b>	<b>PHP1,100</b>	<b>PHP1,300</b>

\* Above rates are exclusive of VAT

### Baggage rate at the airport (Guest can purchase up to 15kg only)

SEF 15kg (Small-15kg)	All domestic flights within the Philippines	<b>PHP700</b>
--------------------------	---	---------------

\* Above rate is VAT exclusive

### Only the following sports equipment add-ons are covered by this fee:



Bicycles



Golf Clubs



Fishing Equipment



Scuba/ Diving Equipment



Bowling Balls

### 【Notes on Sports Equipment Fee】

1. If you don't have a prepaid option, it may be offloaded due to the limited capacity.
2. May be purchased up to 4 hours before the estimated time of departure.
3. Not available on flights serviced by an ATR aircraft.
4. Only one sports equipment fee option is allowed per passenger per sector.
5. Rates are rebookable and upgradable but are non-reroutable, non-refundable.
6. Any additional weight in excess of the sports equipment fee will be payable at the standard excess baggage rate (EBR).

\* The rates written above are subject to change without prior notice.

# CEB SURFBOARD

(Including surfboard case and surfing equipment)

## 《INTERNATIONAL SECTOR》

Per Sector (and v.v.)	Prepaid Fee (SURF)	Rate at the airport (SURG)
Japan – Philippines	JPY 4,800	JPY 6,000
Philippines – Japan	PHP 2,000	PHP 2,500

## 《DOMESTIC SECTOR》

Per Sector (and v.v.)	Prepaid Fee (SURF)	Rate at the airport (SURG)
All domestic flights within the Philippines	PHP 1,600	PHP 2,000

\* Above rate is VAT exclusive

Only the following types of surfboard add-ons are covered by this fee:

### Airbus flights

Type	Length	Width	Weight
Body Boards	Up to 4ft.	2.2 ft.	Up to 20kg
Surfboards/Wakeboards	Up to 7ft.		
Long Surfboards/Paddle Boards	Up to 9ft.		

### ATR flights

Type	Length	Width	Weight
Body Boards	Up to 4ft.	2.2 ft.	Up to 20kg
Surfboards/Wakeboards	Up to 6ft.		
Long Surfboards/Paddle Boards	Up to 6ft.		

\*1Feet = 30.48cm

### 【Notes on Surfboard Fee】

1. CEB Surfboard only covers Body boards, Surfboards, Wakeboards, Long surfboards and Paddleboards.
2. SURF – Available for pre-purchase more than 4 hours from the departure time.
3. SURG – Available for purchase within 4 hours from the departure time at the check-in counter, subject to space availability.
4. Guest may carry only one surfboard per flight.
5. The maximum length is 9 feet for international flight and 6 feet for domestic flight.
6. Each surfboard should not weigh more than 20kg including surfboard case and surfing equipment
7. Any excess weight from your CEB Surfboard allowance is subject to existing Excess Baggage Rate
8. Cebu Pacific can accept up to 5 surfboard bookings for Airbus flights, and up to 2 on ATR flights.

\* The rates written above are subject to change without prior notice.

# PRE-ORDERED MEALS (For travel until July 31, 2018)

## PASTA / NOODLES / RICE MEALS

Initial Booking	Manage Booking
PHP 350	PHP 400



**Chicken Alfredo Pasta**



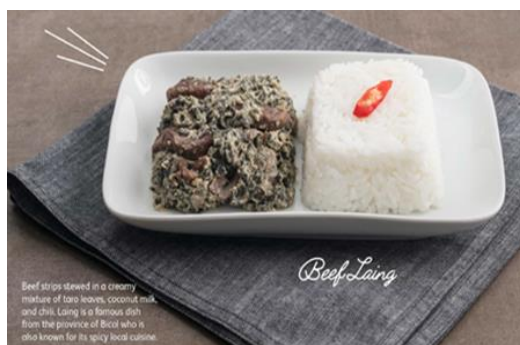
**Pancit Bam-I Guisado**



**Salted Egg Glazed Chicken Rice**



**Chicken Satay with Cashew Nut Sauce**



**Beef Laing**



**Beef Chelo Kebab**



**Spicy Bangus Sisig**



**Baked Dory Tropicale**



# PRE-ORDERED MEALS (For travel until July 31, 2018)

## LIGHT SNACKS

Initial Booking	Manage Booking
PHP 180	PHP 200



Chicken Caesar Croissant



Hazelnut Banana Croissant



Beef Tapa & Egg Burrito

Initial Booking	Manage Booking
PHP 200	PHP 250



Salted Egg Chicken in Baguette

### 【About the In-Flight Meals】

1. All meals are HALAL-certified.
2. May be purchased up to 24 hours before the estimated time of departure.
3. Each guest may avail up to two meals per flight.
4. Pre-ordered meals come with a free drink.
5. Hot Meals and Pastries are available on all international flights. (Only pastries are available on domestic flights.)
6. Light snacks, chips and drinks can be purchased onboard.
7. Please present your Boarding Pass and/or Itinerary Receipt to claim your pre-ordered meal when service starts.
8. Inflight meals may vary depending on flight route.
9. Please note that the inflight meal selections listed above may change or vary without prior notice.



# PRE-ORDERED MEALS (For travel from August 1, 2018 onwards)

## PASTA / RICE MEALS

Initial Booking	Manage Booking
PHP 350	PHP 400



**Shrimp Alfonso Pasta**

Penne pasta tossed in our creamy Alfonso tomato sauce, topped with shrimp and parmesan cheese.



**Tuna Pesto Pasta**

Tuna in sweet and spicy pesto sauce tossed in spaghetti noodles topped with olives and parmesan cheese.



**Chicken Sisig**

healthier version of the famous pork sisig. This version is made with marinated chicken, grilled and tossed with red onions, calamansi (Philippine lime), chili, and spices.



**Chicken Kebab**

Chicken kebab skewers served with yellow and white rice, and grilled tomato. Served with our tangy garlic yogurt sauce.



**Beef Kare-Kare**

Braised beef in our special kare-kare cashew nut sauce, served with steamed vegetables and white rice.



**Beef Pares**

A sweet and savory Filipino beef dish, cooked with star anise and spices, paired with garlic rice.



**Fish Escabeche**

Roasted fillet of dory with our classic Escabeche sauce, served with steamed white rice.



**Stir-Fried Mixed Seafood with Salted Egg Sauce**

Slices of fish, shrimp, and squid, tossed in our signature salted egg sauce, served with steamed white rice.



# PRE-ORDERED MEALS (For travel from August 1, 2018 onwards)

## LIGHT SNACKS

Initial Booking	Manage Booking
PHP 180	PHP 200



**Grilled Chicken Herb Bun**

Slices of grilled chicken with a colorful medley of tomato relish, red cabbage, and lettuce, in freshly baked herb bun.



**Chicken Inasal Burrito**

Bacolod style chicken inasal, marinated with lemongrass and annatto, sprinkled with cheese and wrapped in a soft tortilla.



**Ube Langka Croissant**

Slices of caramelized jackfruit and ube halaya spread (sweet taro) in a soft ube croissant.

Initial Booking	Manage Booking
PHP 250	PHP 300



**Beef Pastrami in Focaccia**

Beef pastrami with tomato relish and lettuce, topped with cheddar cheese, in freshly baked rosemary and parmesan focaccia bread.

### 【About the In-Flight Meals】

1. All meals are HALAL-certified.
2. May be purchased up to 24 hours before the estimated time of departure.
3. Each guest may avail up to two meals per flight.
4. Pre-ordered meals come with a free drink.
5. Hot Meals and Pastries are available on all international flights. (Only pastries are available on domestic flights.)
6. Light snacks, chips and drinks can be purchased onboard.
7. Please present your Boarding Pass and/or Itinerary Receipt to claim your pre-ordered meal when service starts.
8. Inflight meals may vary depending on flight route.
9. Please note that the inflight meal selections listed above may change or vary without prior notice.



# ADVANCE SEAT SELECTOR OPTION

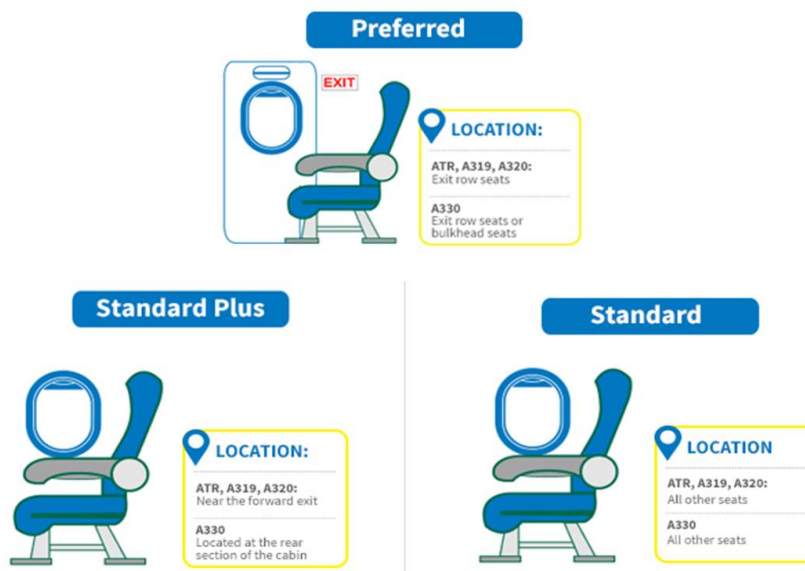
## 《INTERNATIONAL SHORT HAUL TRAVEL》

SEAT TYPE ( Per Passenger / Per Flight )	INITIAL BOOKING	MANAGE BOOKING
Standard	JPY 760	JPY 1,000
Standard Plus	JPY 1,200	JPY 1,600
Preferred	JPY 1,700	JPY 2,300

## 《DOMESTIC PH TRAVEL》

SEAT TYPE ( Per Passenger / Per Flight )	INITIAL BOOKING	MANAGE BOOKING
Standard	PHP 180	PHP 230
Standard Plus	PHP 220	PHP 270
Preferred	PHP 350	PHP 430

\* Above rates are exclusive of VAT



Aircraft Type	Seat Type	Seat Number
A330	Preferred	1 DEF / 2 BC / 3 GHJ / 15 DEF / 16 BC GH / 36 DEF / 37 BC GH
	Standard Plus	2A / 16 AJ / 37 AJ / 48 to 53 AB HJ
	Standard	Any seat with the exception of those mentioned above
A320	Preferred	1 ABC DEF / 14 ABC DEF
	Standard Plus	2345 ABC DEF / 12 ABC DEF
	Standard	Any seat with the exception of those mentioned above
A319	Preferred	1 ABC DEF / 11 ABC DEF
	Standard Plus	2345 ABC DEF / 10 ABC DEF
	Standard	Any seat with the exception of those mentioned above
ATR (78)	Preferred	2 AB / 21 AB CD
	Standard Plus	1CD / 17 AD / 18 to 20 AB CD
	Standard	Any seat with the exception of those mentioned above
ATR	Preferred	2 AB / 20 AB
	Standard Plus	1 CD / 17 AD / 18 to 19 AB CD
	Standard	Any seat with the exception of those mentioned above

\* May be purchased up to 4 hours before the estimated time of departure.

\* The rates written above are subject to change without prior notice.

## 【Emergency Exit Row Seat Conditions】

※There are certain conditions or criteria that guest must meet to guarantee your preferred exit row seat option on board.



- ※ Guest must be at least fifteen (15) years old or above.
- ※ Guest must be able to understand and carry out instructions, which will be given in English on board during the flight.
- ※ Guest must be able to speak English.
- ※ Guest must not be travelling with someone who requires his assistance in an emergency evacuation.
- ※ Guest must be fit and able-bodied.
- ※ Guest must not have any permanent or temporary impairment:  
Examples:
  - ① Deaf / Hearing Impaired
  - ② Blind / Vision Impaired
  - ③ Any strength or mobility limitation
  - ④ Intellectual Impairment
  - ⑤ Travelling with a Service Dog
- ※ Guest must be able to check outside conditions and react to crew commands.
- ※ Guest must be able to reach, open, lift and throw out the exit door in an emergency evacuation.
- ※ Guest must acknowledge the exit row briefing given by the Cabin Crew once onboard the aircraft.
- ※ Guest must be willing to help or assist the cabin crew in the unlikely event of an evacuation or emergency situation.
- ※ Guest must not be seated with an infant or a passenger below 15 years of age.
- ※ Guest must not require the use of an extension seat belt or have purchased an extra seat.
- ※ Guest must not be elderly.

# Cebu Pacific Guidelines

Thank you for flying with Cebu Pacific.

When booking your flight, please refer to the guidelines and conditions below.



Revised on 08 November 2017

Conditions when boarding the flight	
Infant under 2 years of age	Infants must be more than 8 days old. Bassinets are not available in cabin. If reserving an infant seat, passenger must supply an FAA approved child safety seat.
Children (2 to under 7 years old)	Children must be accompanied by somebody at least 18 years of age.
Unaccompanied Minor Travel (UMNR) (7 to under 12 years old)	Unaccompanied minors may be accepted with fee for flights within the Philippines only. Advance notice and a <a href="#">Passenger Handling Form</a> are required.
Young Passenger Travelling Alone (YPTA) (12 to under 18 years old)	Young Passengers can travel alone for both domestic and international flights. Foreign children below 15 years old are required to present WEG upon arrival in the Philippines. Filipino children below 18 years old must present travel clearance issued by DSWD. Please contact the Philippine Embassy for more information.
Expectant mothers	All expectant mothers shall be required to present an accomplished <a href="#">Passenger Handling Form</a> . Over 34th week: The expectant mother shall also be required to present medical certificate from her personal physician stating the age of gestation with notation "Fit to travel", dated within 10 days of initial departure.
Wheelchair request	48 hours notice required if bringing own wheelchair or if one is required at the airport. As no ground staff or cabin crew are available to provide assistance, wheelchair passengers must be accompanied by someone who can assist them.
Passengers requiring assistance	Not permitted to travel alone, as there will be no cabin crew available to provide assistance.
Animals	Pets are not allowed. Please contact us to book with a medically certified service animal.
✂ Click on the link to download and print the <a href="#">Passenger Handling Form</a> .	
Airport/Check-in Counter	
Departure Terminal	Narita Airport, Tokyo: Terminal 2 / Check-in Counter R (Manila-bound/Cebu-bound)
	Chubu Centrair International Airport, Nagoya: Check-in Counter B
	Kansai International Airport, Osaka: Terminal 1 / Check-in Counter, Island B
	Fukuoka Airport, International Terminal Building / Check-in Counter C
	Manila Airport: Terminal 3
Mactan-Cebu International Airport: Terminal 2 / Check-in Counter, Island C	
Check-in Time	Check-in opens 3 hours before departure and closes 45 minutes before departure. ✂ Failure to check-in within the prescribed time will result in the confirmed booking being cancelled.
Boarding Time	Passengers must be at the boarding gate at least 30 minutes prior to departure time.
Airport Lounge	Not available.
Baggage	
Carry-on baggage	AIRBUS FLIGHTS: One carry-on bag per passenger weighing no more than 7Kg. Maximum dimensions: 56cm x 36cm x 23cm. ATR FLIGHTS: One carry-on bag per passenger weighing no more than 7Kg. Maximum dimensions: 56cm x 35cm x 20cm.
Checked baggage	Fees are charged based on checked baggage weight. Bags exceeding the prepaid weight will incur an additional fee at the check-in counter on day of departure. Maximum checked baggage weight: (Airbus) 40kgs (ATR) 20kgs NOTES: (1) No single piece of baggage can exceed 32kgs. (2) Baggage cannot be checked to final destination if connecting to another airline. (3) Infants without a seat cannot book checked baggage.
Connecting flights in Manila	Passengers traveling to the Philippines with a Connex Fare booking and domestic flight connection must collect their baggage upon arrival at Manila Airport, clear customs, and then proceed to baggage drop. For travel to Japan booked with a Connex Fare, baggage will be checked all the way to the Japan destination upon check-in at point of origin. Passengers not using a Connex Fare and with a domestic connecting flight in either direction, will need to clear customs and re-check baggage at the check-in counter in Manila Airport.
Bassinet / Buggy	Bassinets, prams and strollers are not allowed inside the cabin, but can be checked-in for free.
Sports equipment	Sports equipment baggage is subject to applicable fees. Only available on Airbus flights and space for sports equipment is limited per aircraft. If the total weight of baggage and equipment exceeds the prepaid baggage allowance, an excess baggage fee will be charged.
CEB Surfboard	CEB surfboard is subject to applicable fees. Guest may carry only one surfboard per flight.
In-flight Service	
Advanced seat selection	A charge will apply for advance seat selection.
Economy class	Hot meals, beverages, and amenities are sold in the cabin.
In-flight meals	There is a charge for hot meals.
Food and beverage	Meals / Snacks: Available for purchase inside the cabin. Drinks: Available for purchase in the cabin. However, any beverages/liquid items are prohibited on board.
Special meals	The airline does not serve special meals for passengers with food allergies or illnesses.
Currency	Credit cards (VISA or MasterCard) are accepted for duty free shopping up to US\$500. Cash payment can be made in Japanese Yen, Philippine Pesos or US Dollars (change will be given in Philippine Pesos).
Miscellaneous	
Overseas travel insurance	We highly recommend purchasing overseas travel insurance to protect against accidents, medical services, recovery of lost travel documents, loss/delay/damage of checked-in baggage, flight delays, trip curtailment, and cancellation for medical or legal emergency.
Other	All Cebu Pacific flights are non-smoking.

**セブパシフィック航空 時刻表**  
**FLIGHT SCHEDULE** (Effective from 25 March 2018 to 27 October 2018)

日本 ⇨ フィリピン JAPAN ⇨ PHILIPPINES				
日本 JAPAN	出発 Departure	フィリピン PHILIPPINES	到着 Arrival	便名 FLIGHT NO.
東京/成田 Tokyo/NARITA	13:05	マニラ MANILA	17:20	5J5055 毎日 / Daily
	20:25		00:25+1 (翌日着)	5J5053 毎日 / Daily
名古屋/中部 Nagoya/CHUBU	21:20		00:40+1 (翌日着)	5J5039 毎日 / Daily <small>(*一部運休日あり / Some flights will not operate on certain dates)</small>
大阪/関西 Osaka/KANSAI	21:15		00:25+1 (翌日着)	5J827 毎日 / Daily <small>(*一部運休日あり / Some flights will not operate on certain dates)</small>
福岡 FUKUOKA	20:05		23:00	5J923 火・木・日 Tue, Thu, Sun
東京/成田 Tokyo/NARITA	11:55	セブ CEBU	16:05	5J5063 火・木・土・日 Tue, Thu, Sat, Sun <small>(*一部運休日あり / Some flights will not operate on certain dates)</small>
フィリピン ⇨ 日本 PHILIPPINES ⇨ JAPAN				
フィリピン PHILIPPINES	出発 Departure	日本 JAPAN	到着 Arrival	便名 FLIGHT NO.
マニラ MANILA	06:15	東京/成田 Tokyo/NARITA	11:35	5J5054 毎日 / Daily
	14:10		19:30	5J5052 毎日 / Daily
	15:20	名古屋/中部 Nagoya/CHUBU	20:25	5J5038 毎日 / Daily <small>(*一部運休日あり / Some flights will not operate on certain dates)</small>
	14:55	大阪/関西 Osaka/KANSAI	20:10	5J828 毎日 / Daily <small>(*一部運休日あり / Some flights will not operate on certain dates)</small>
	14:25	福岡 FUKUOKA	19:20	5J922 火・木・日 Tue, Thu, Sun
セブ CEBU	05:30	東京/成田 Tokyo/NARITA	11:10	5J5062 火・木・土・日 Tue, Thu, Sat, Sun <small>(*一部運休日あり / Some flights will not operate on certain dates)</small>

\* 上記スケジュールは予告無く変更されることがあります。

\*Please note that the schedules are subject to change without prior notice.

\*運休日/Non-operating Dates for NGO ROUTE: 13,17,20,24,27JUN/01,04,08,13,17,20,24,27,31JUL/07,11,14,18,21SEP/01,04,08,11,15,18,22,25OCT

\*運休日/Non-operating Dates for KIX ROUTE: 15,19,22,26,29JUN/03,06,09,12,16,19,23,26JUL/02,05,09,12,16,19SEP

\*運休日(木曜日)/Non-operating Dates for NRT⇄CEB ROUTE (THU): 28JUN-19JUL/13,20SEP

\*運休日(土曜日)/Non-operating Dates for NRT⇄CEB ROUTE (SAT): 16,23JUN/06-27OCT

**出発ターミナルのご案内 (Departure Terminal)**

**日本 (in Japan)**

成田空港(Narita Airport, Tokyo)

関西国際空港 (Kansai International Airport, Osaka)

中部国際空港(Chubu Centrair International, Nagoya)

福岡空港(Fukuoka International Terminal, Fukuoka)

第2ターミナル/チェックインカウンター-R (Terminal 2 / Check-in Counter R)

第1ターミナル/チェックインカウンター-B (Terminal 1 / Check-in Counter B)

チェックインカウンター-B (Check-in Counter B)

チェックインカウンター-C (Check-in Counter C)

**フィリピン (in the Philippines)**

マニラ・ニノイ・アキノ国際空港(Manila NAIA Airport)

マクタン・セブ国際空港(Mactan Cebu International Airport)

第3ターミナル (Terminal 3)

第2ターミナル/チェックインカウンター-C (Terminal 2 / Check-in Counter C)